

Pencester Road, Dover

Northbound Bus Contraflow



Newsletter 2 - November 2024

Progress Update

Phase 1 – Pencester Road / Maison Dieu Junction (eastern side)

This phase included the removal of the widened footway, new carriageway/footway construction, new signal ducting/chambers and diversion of Virgin Media apparatus. Progress in this phase of works is now largely complete.

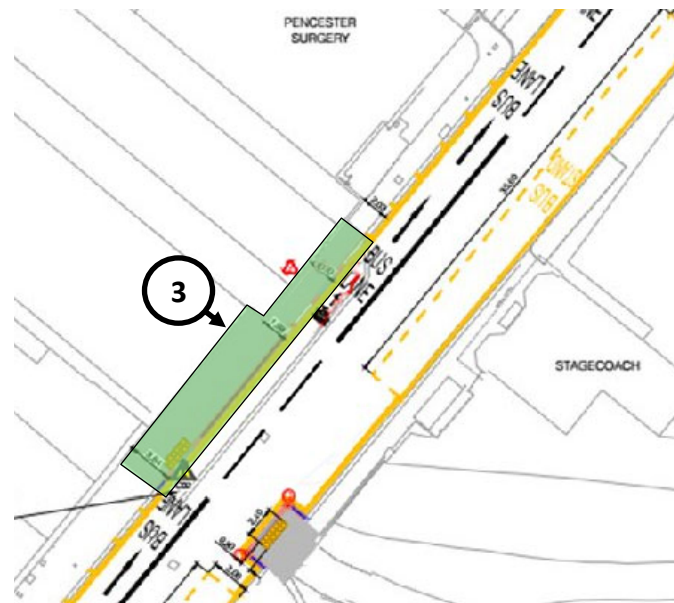
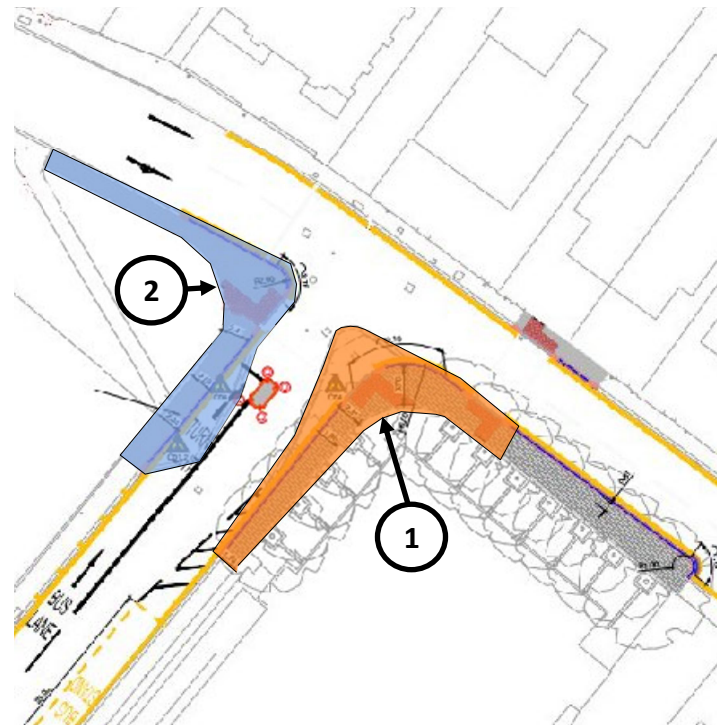
Phase 2 - Pencester Road / Maison Dieu Junction (western side)

The removal of the widened footway and new carriageway/footway construction is largely complete but cannot be finalised until the SGN apparatus has been diverted. This is programmed to be carried out towards the end of November which will then allow the remainder of the new carriageway construction and the new signal ducting and chambers to be completed.

Phase 3 - Pencester Road (adjacent to Caffé Macari's)

Works on the removal of the widened footway and the construction of the new carriageway on the western side of Pencester Road began on the 25 October and will be completed during the week commencing 4 November. This work is being carried out in two halves to maintain access to the parking area to the rear of the shops.

Additional maintenance work is also required in this section to trim branches of two trees that are overhanging the highway along the frontage of Dover Technical College. We are currently in discussions with the College to programme this work.



ADVANCE NOTICE OF ROAD CLOSURE

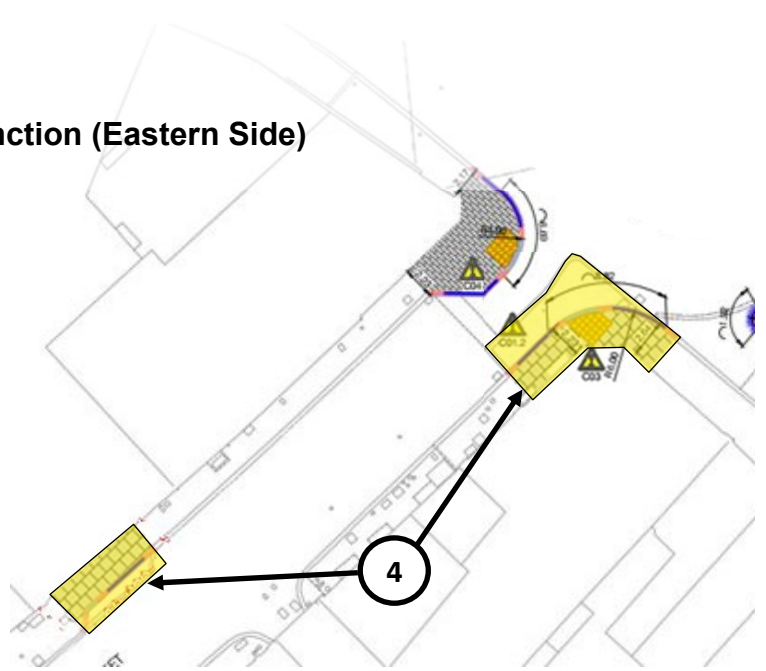
Pencester Road will be closed to through traffic at its junction with Biggin Street on 18 November for approximately 3 weeks including weekends (Saturday 8am up to 4pm and Sunday 9am up to 4pm). Access to properties within Pencester Road will be maintained from Maison Dieu Road. Stagecoach will be making customers aware of any changes being made to bus services operating in Pencester Road. (See Phase 5 & 6 overleaf for more details about the road closure)

Forthcoming works

Phase 4 – Worthington Street/Biggin Street Junction (Eastern Side)

This phase is programmed to commence on 4 November and take approximately 1-2 weeks to complete. Works will include the removal of the widened footway, changes to the existing highway drainage, new signal ducting/chambers and new footway/carriageway construction.

The works will be carried out by localised narrowing of the carriageway and temporary closure of the footway. Temporary suspension of adjacent taxi and parking bays will be required. This phase also includes the removal of part of the widened footway at the former bus stop in Worthington Street.



Phase 5 & 6 – Pencester Road Junction with Biggin Street

These two phases have now been combined to expedite the work and are programmed to commence on 18 November for an approximate period of 5 weeks. The first 3 weeks will require a full closure of Pencester Road. Weekend working will be undertaken to expediate the works during the closure (Saturdays 8am up to 4pm and Sunday 9am up to 4pm). When it is safe to do so the road will be reopened.

The remainder of the works in this phase can then be carried out by narrowing the carriageway around the works area. Localised closures of footways and the temporary suspension of parking bays in the vicinity of the works will be required. Access to all affected properties will be maintained at all times unless otherwise agreed with the owners.

During the closure the remainder of Pencester Road will be made two-way, with temporary traffic signals provided at the Maison Dieu Road junction to allow vehicles from Pencester Road to exit safely onto Maison Dieu Road.

Works in these sections include the removal of the widened footway on both sides of Pencester Road, changes to the existing highway drainage, new signal ducting/chambers, footway/carriageway construction and diversion of UKPN apparatus.

How to contact us

We ask for your patience and co-operation whilst these works are undertaken but if you have any concerns or require more information about the work please call us on **03000 418181** (Monday to Friday 9am to 5pm) or via email at Pencesterroad@kent.gov.uk. You can also view information on the project webpage at www.kent.gov.uk/pencester-road.

For your safety and the safety of our workforce please drive carefully and slowly through the roadworks.